

# Framtidens Enterprise



Mats Sjöstrand  
Sales Engineer  
SIP Phone / email:  
[mats.sjostrand@nortel.com](mailto:mats.sjostrand@nortel.com)  
IP-Phone: +46 8 508 836 40

**NØRTEL**



**VPN Gateway**



SSL / IPsec termination



**Secure Network Access**



User/Application Access Control

**Threat Protection System**



Defense Center & Intrusion Sensor

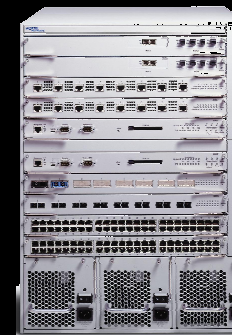


**Resilient  
10/100/1000/10000  
Route / Switches**



ERS 5510 / 5520 / 5530

**Core  
Router / Switch  
Modular**



ERS 8600



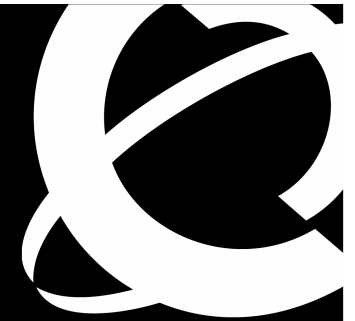
**WLAN  
equipment**



Wireless Security Switch & Location System



# Delivering Availability



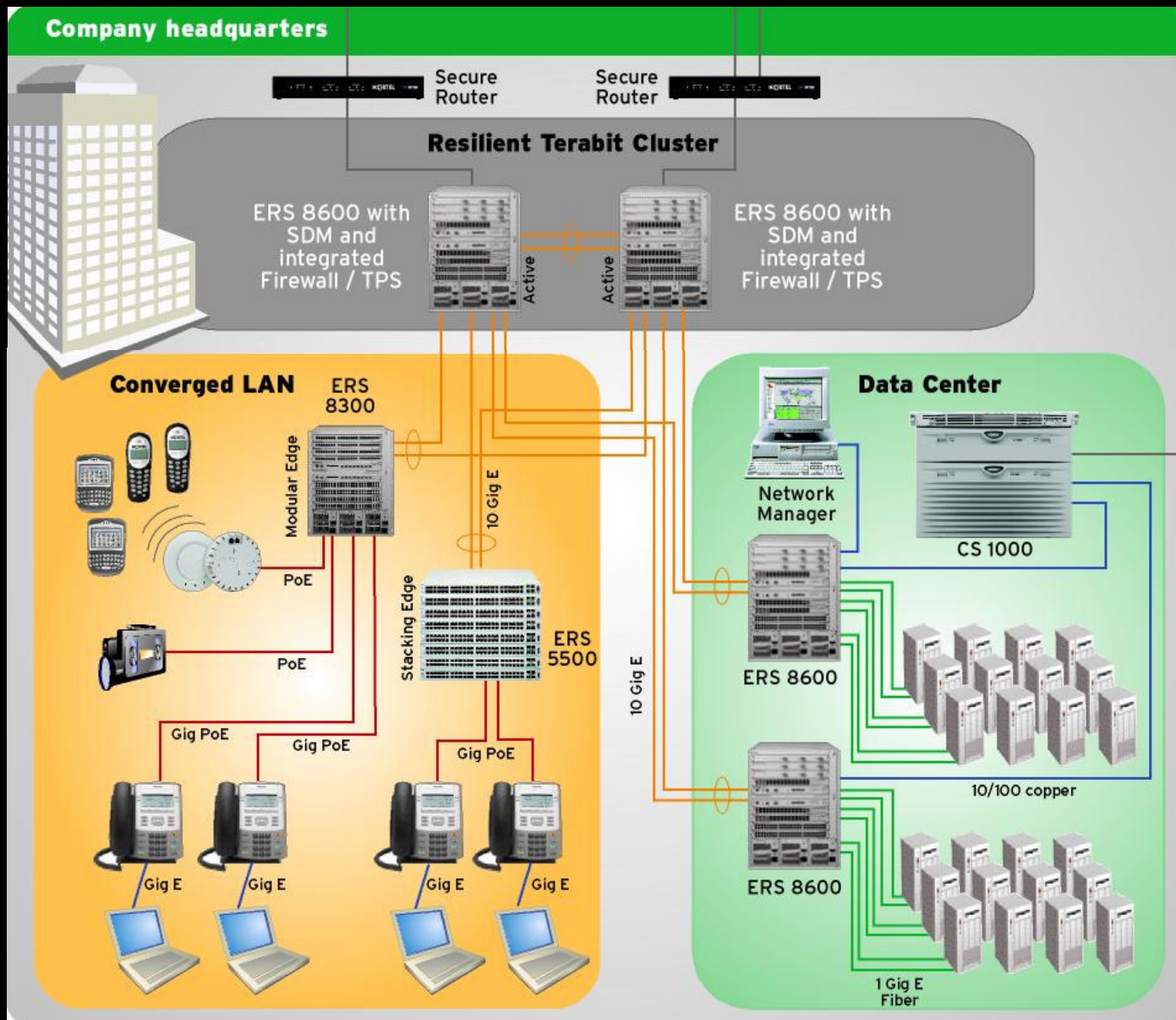
## RELIABILITY



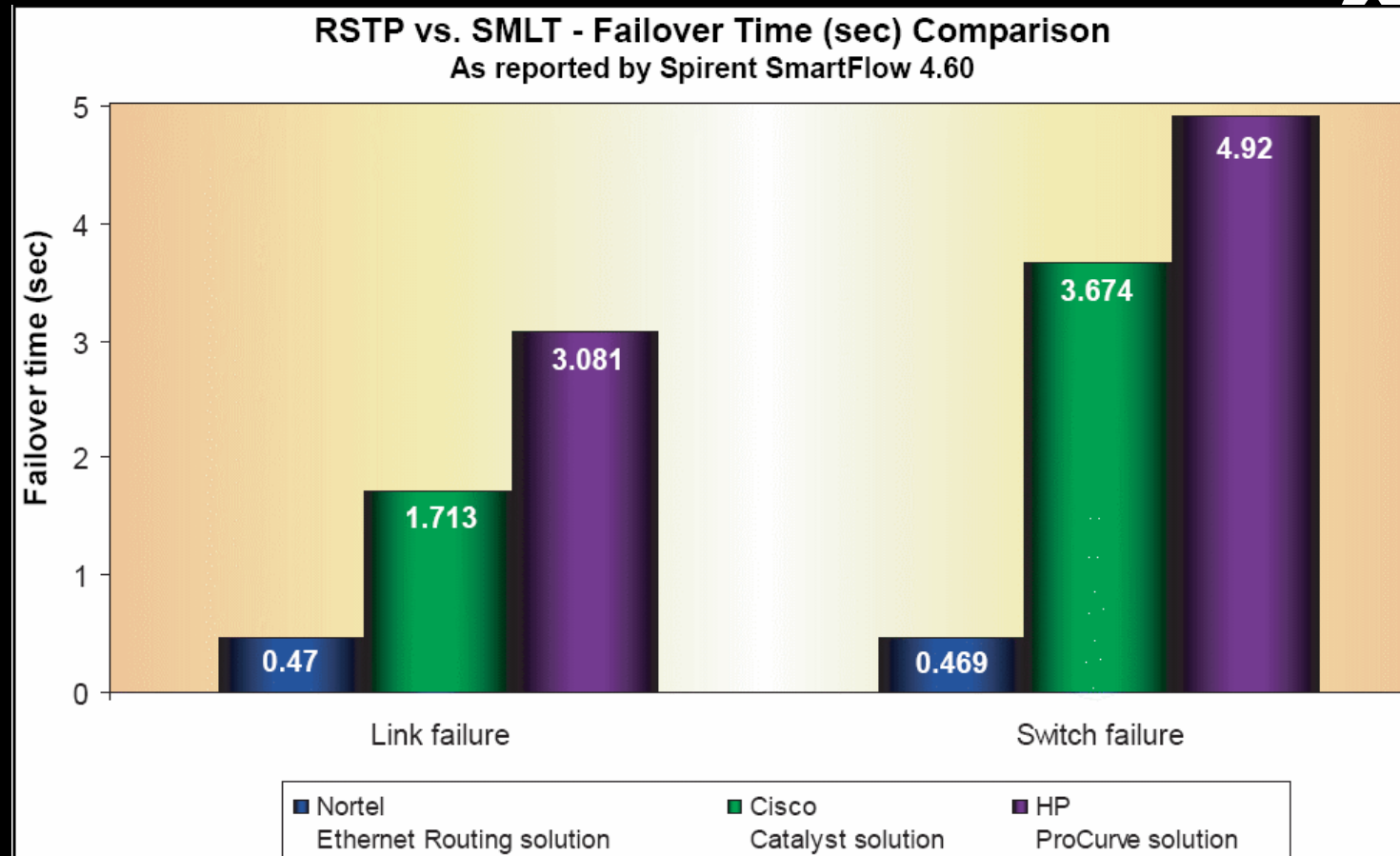
## REDUNDANCY



# Nortel Converged Network



# Market leading recovery times !



**Note:** Number of CLI commands only considers commands necessary to configure RSTP or SMLT using two access switches and two core switches.

**Nortel Ethernet Routing Switch Solution:** Consists of two Ethernet Routing Switch 5530 access switches and two Ethernet Routing 8600 core switches using SMLT for resiliency.

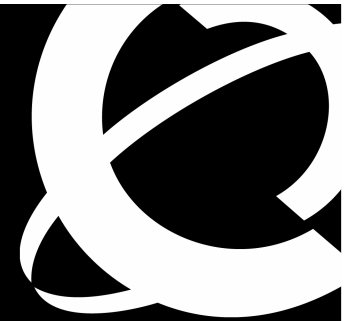
**Cisco Catalyst Switch Solution:** Consists of two Catalyst 3750G access switches and two Catalyst 6500 core switches using RSTP for resiliency.

**HP ProCurve Switch Solution:** Consists of two ProCurve 3400cl access switches and two ProCurve 9300 core switches using RSTP for resiliency.

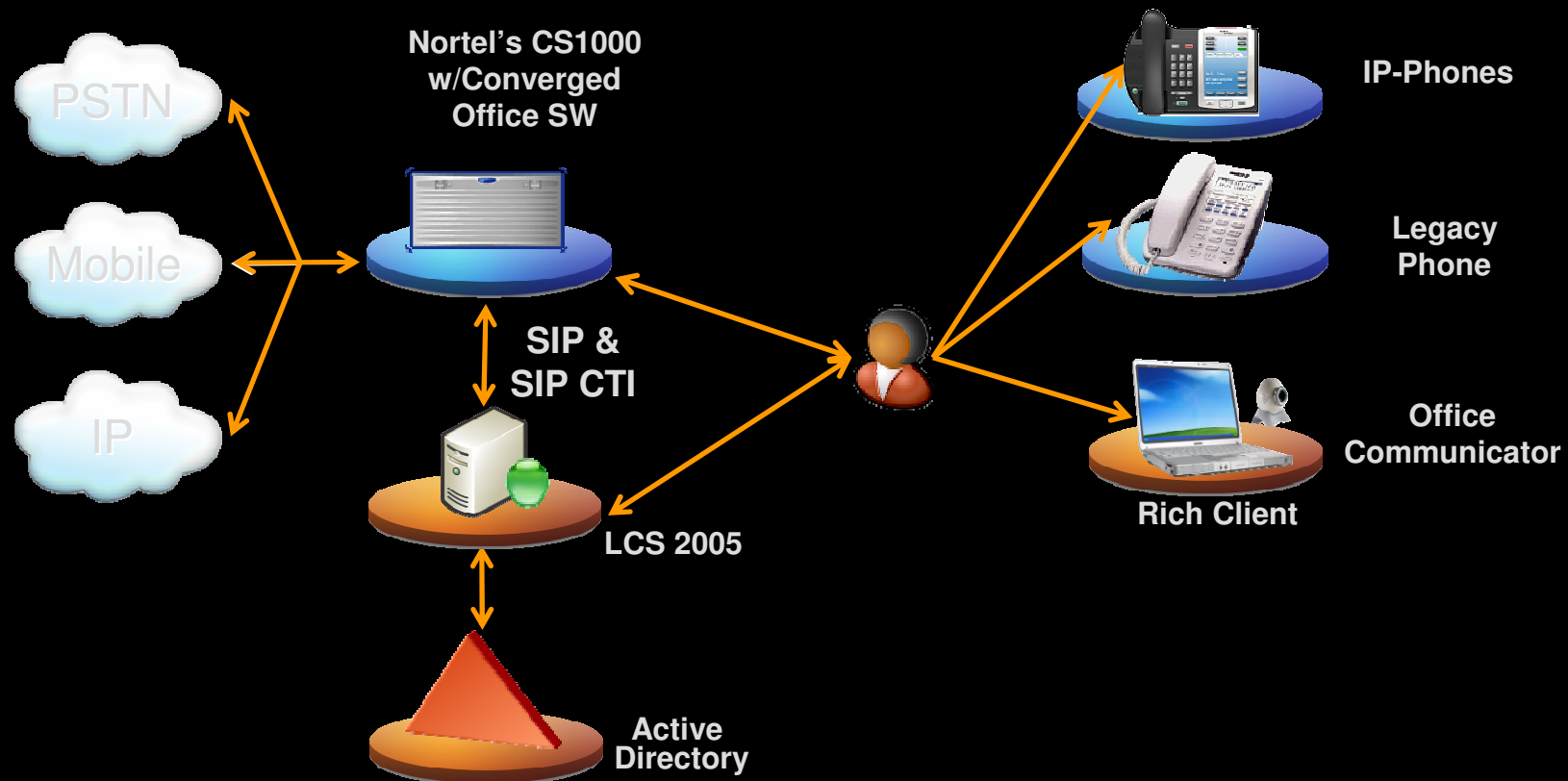
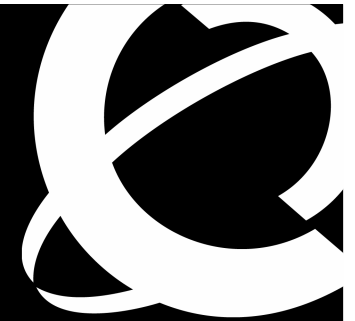
Source: The Tolly Group, September 2005

Figure 5

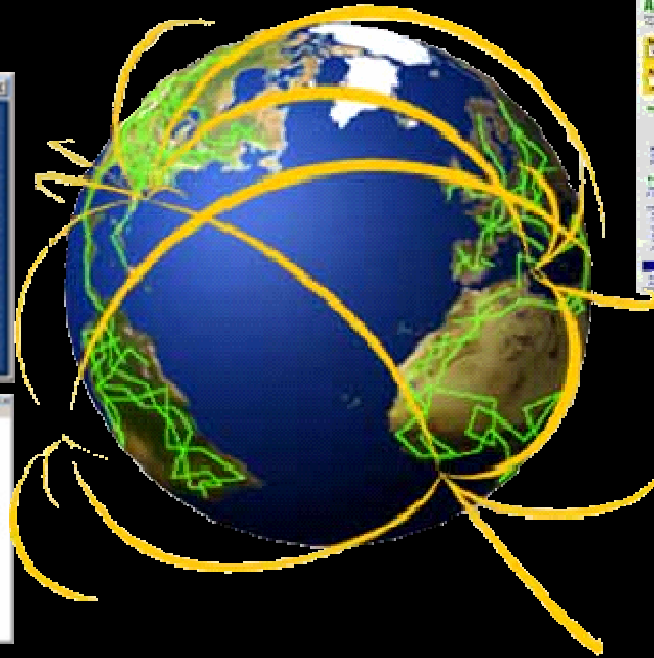
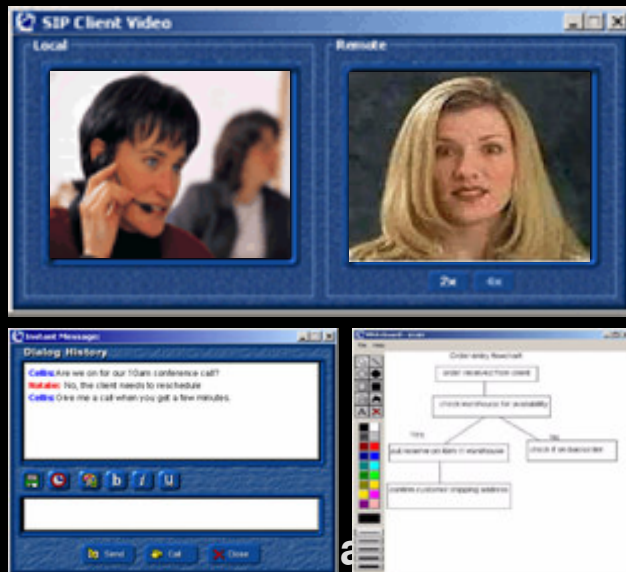
# Multimedia Transformation



# Emerging Enterprise Communication



# Emerging Enterprise Applications Model



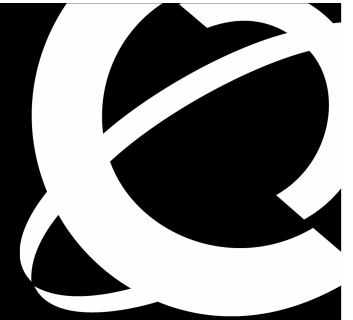
Web services



Converged communications

Improved productivity and efficiency, while lowering cost

# Facets of Security challenges

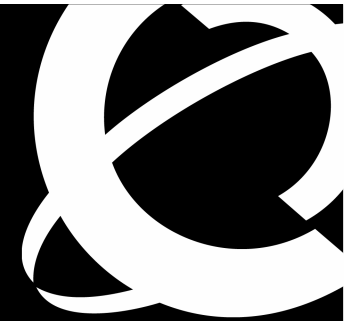


## > Information Assurance

- Protection of data and information
- At Rest and in Flight
- Authentication/Identity
- Authorization/Entitlement
- Encryption



# Bandwidth growth



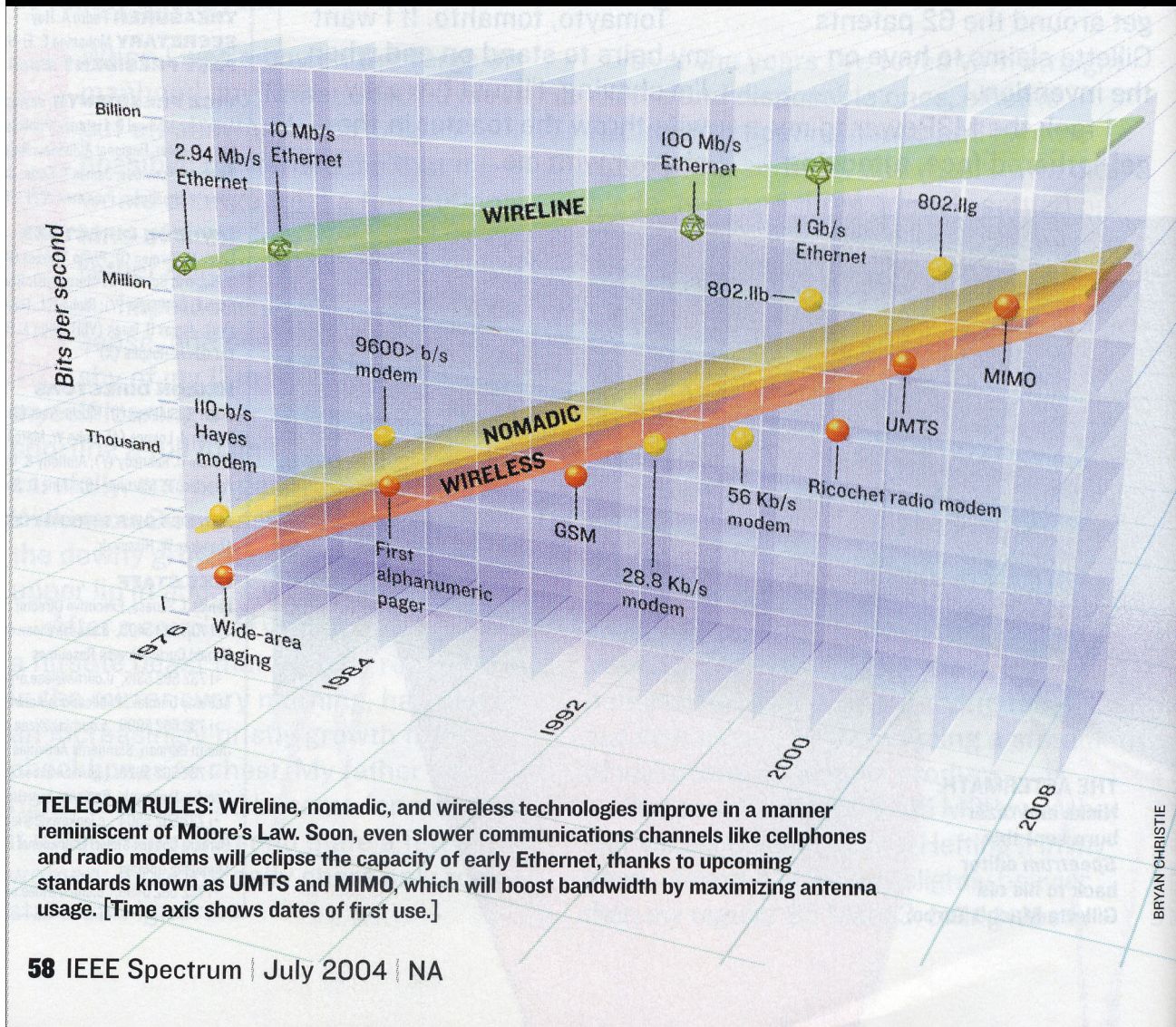
- > Anytime, anywhere broadband access is becoming a reality
- > Wireless will displace wired connectivity for many users

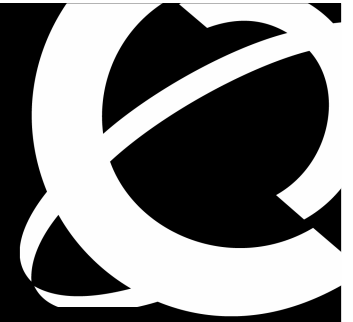
## Legend

Wireline: Ethernet

Nomadic: Connectivity from place to place (home, hotel, coffee shop)

Wireless: Public wireless





# Enterprise Management

