

Public Transport Connected

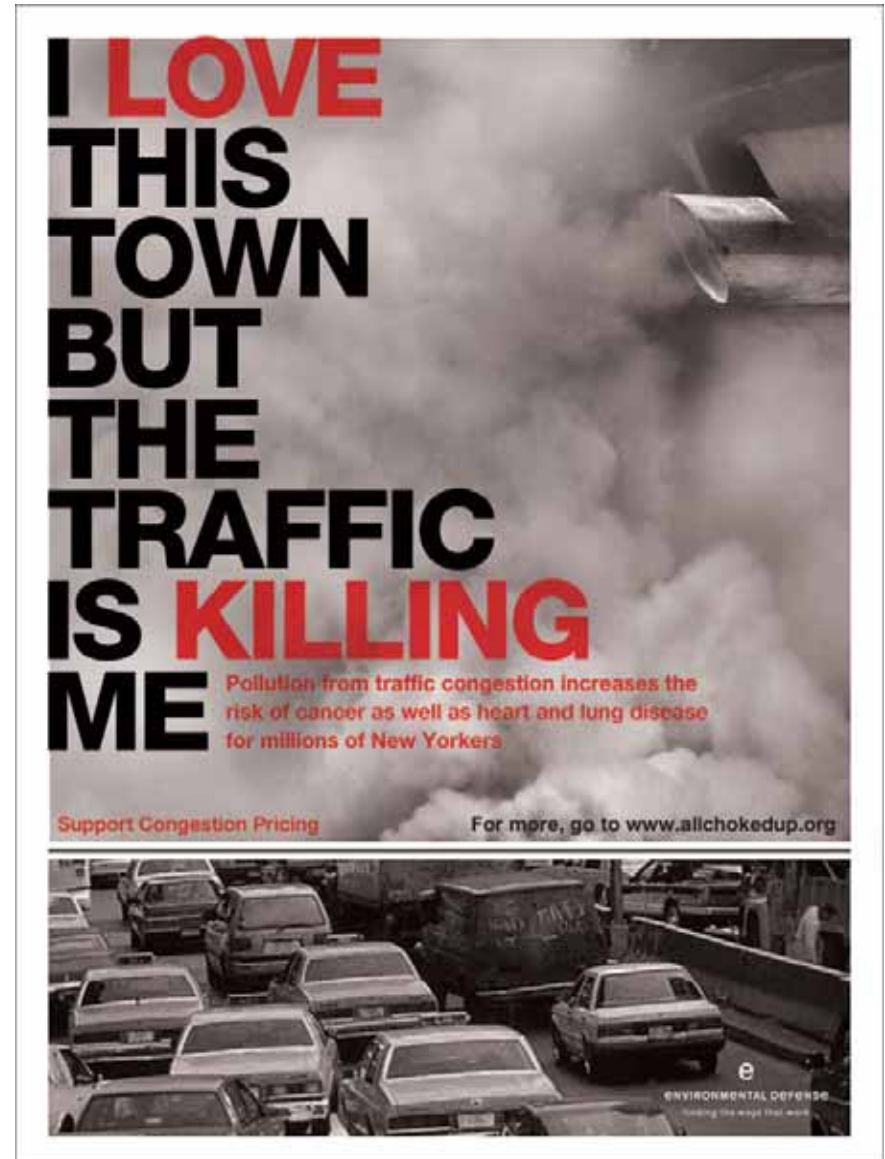
Examples from the World of Commuting People

Åke Lindström. Business Development, Stockholm Public Transport

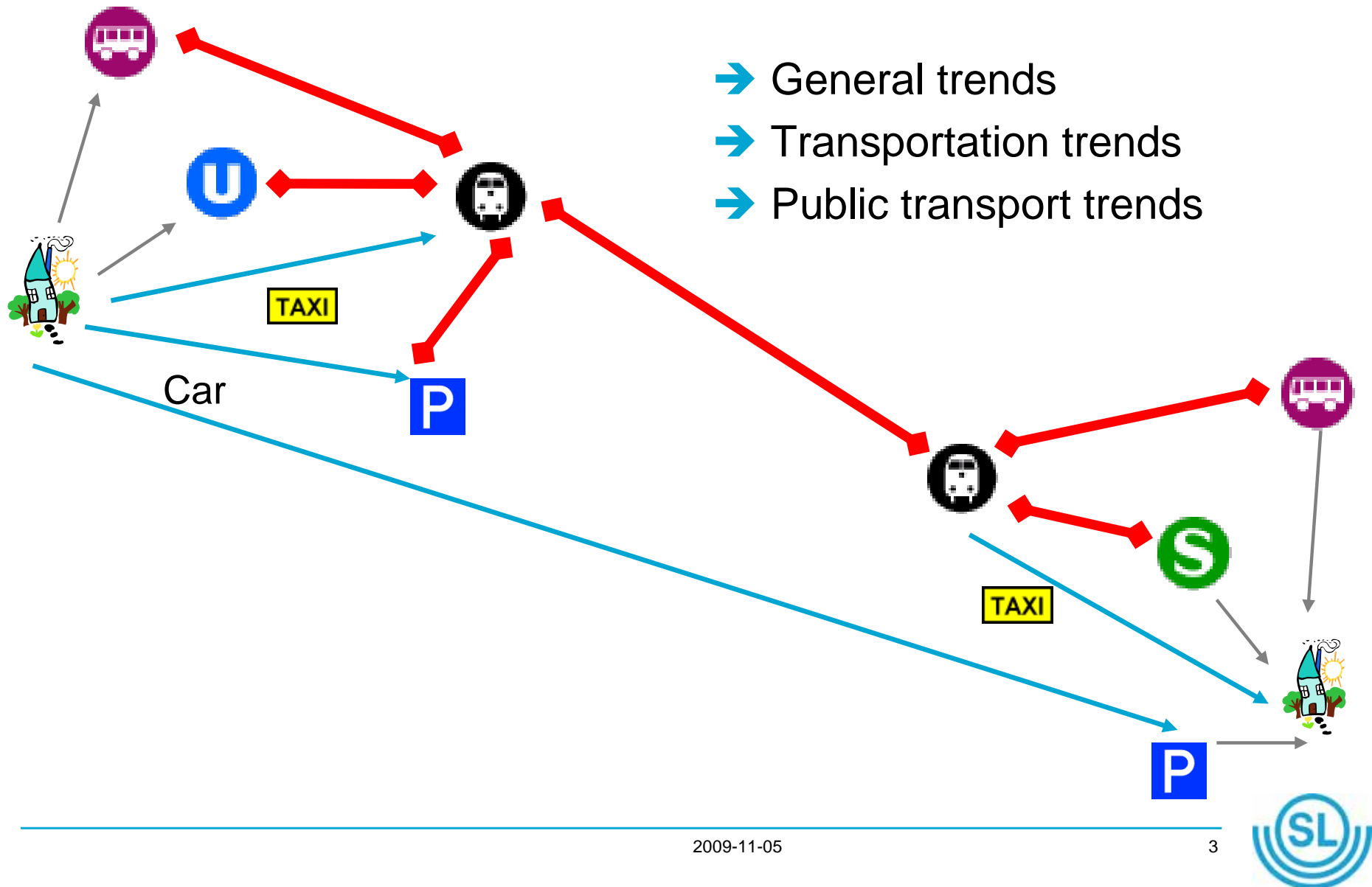


Åke Lindström

- Expert ITS/ICT
- Member of UITP IT & Innovations Commission
- Member of InformNorden Steering Committee
- Member of ITS Sweden



Agenda

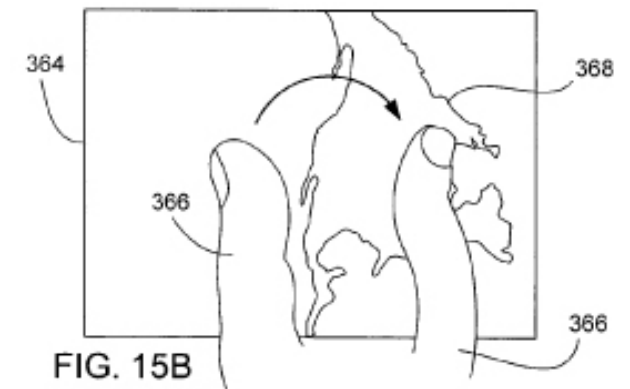
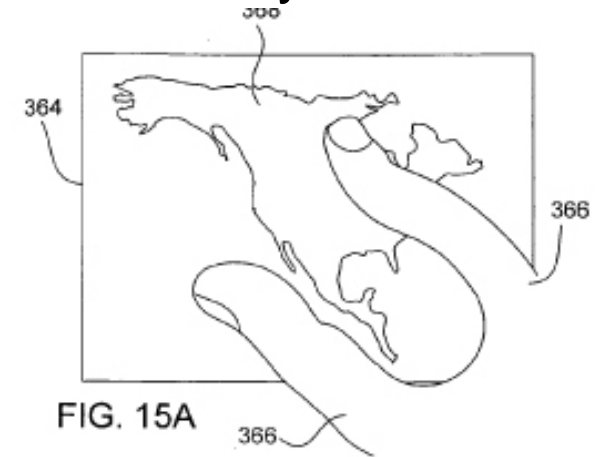
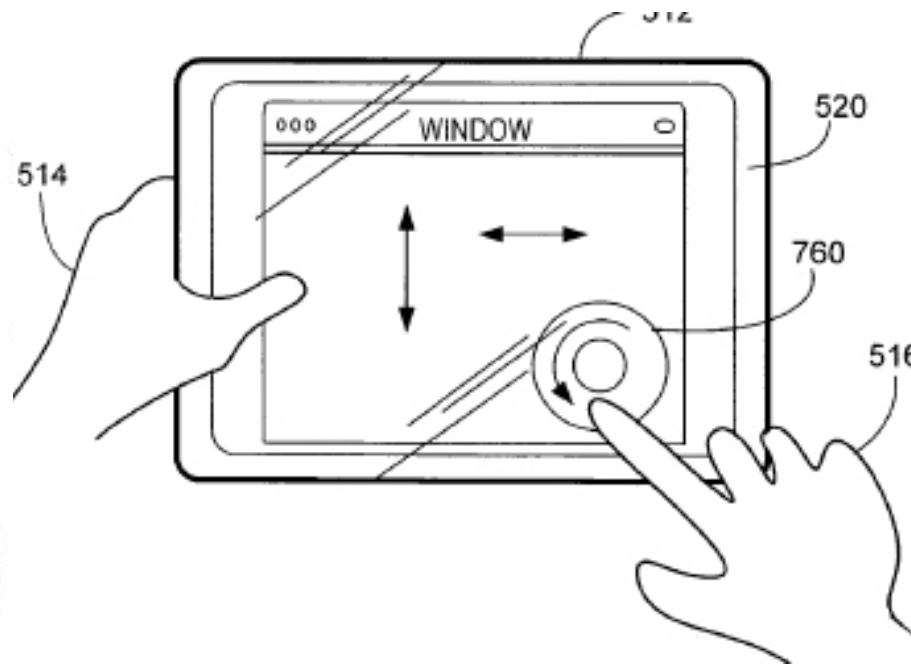
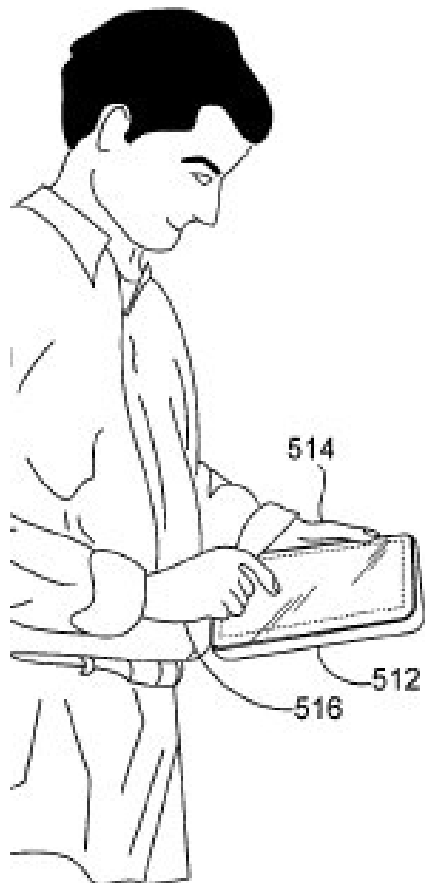


General trends



Everything becomes mobile...

→ Everyone expects to be able to do everything on the way



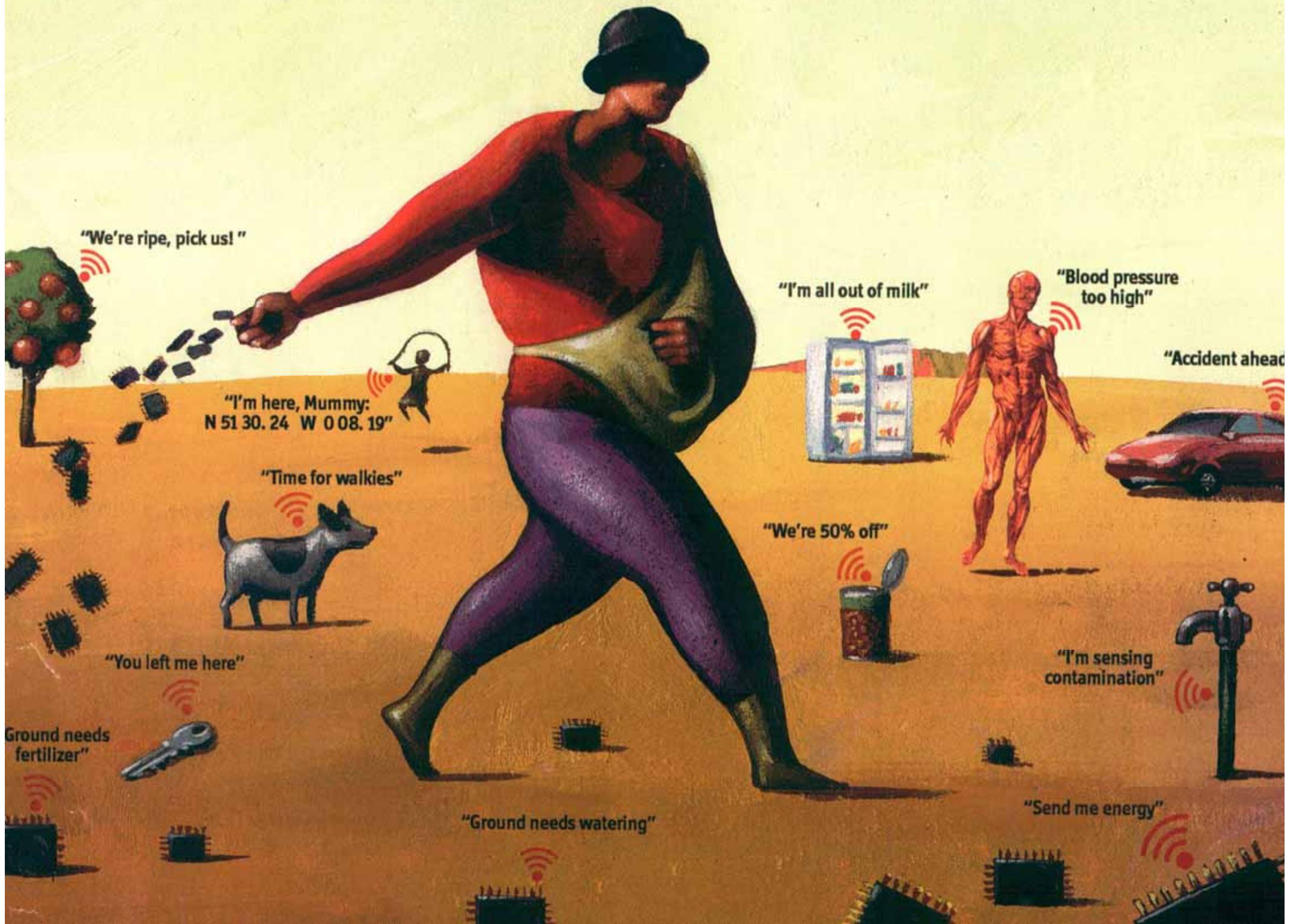
Everything will be localized

- Your position will be asked for
- He/She who disconnects will be WANTED!



Every "thing" will be connected





"We're ripe, pick us!"

"I'm here, Mummy:
N 51 30.24 W 0 08.19"

"Time for walkies"

"You left me here"

Ground needs
fertilizer"

"Ground needs watering"

"I'm all out of milk"

"We're 50% off"

"Blood pressure
too high"

"Accident ahead"

"I'm sensing
contamination"

"Send me energy"

Transportation trends



The car will continue to have a major role in the transport system [1]

→ It will become a part of a integrated transport system



MIT foldable "City Car"

The car will continue to have a major role in the transport system [2]

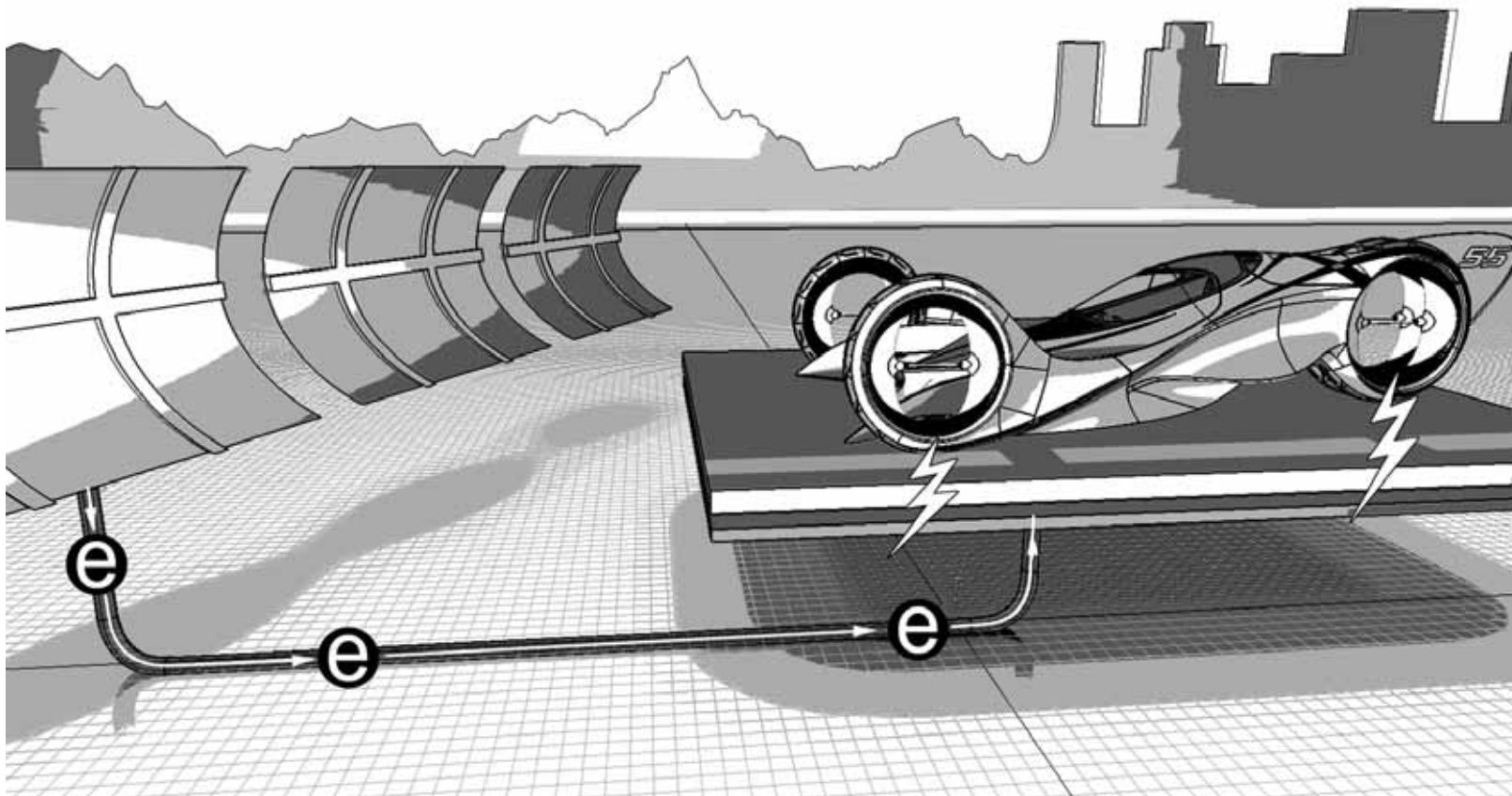
→ It will become a "service" - not a "thing"



The TU Delft Open source car "C,mm,n"

The car will continue to have a major role in the transport system [3]

→ It will be inter-connected (V2V; V2I; V2X)



The "Mazda Kaan" concept car powered with electro-conductive polymer

General Transportation Health trend



What is Legible London?

Legible London is a new pedestrian wayfinding system to help people walk around the Capital.

We're piloting the system in three areas to make sure it will be effective across London.

[Find out more about Legible London](#)



[View the gallery](#)



[Read more about the pilots](#)

SummerStreets

August 8th, 15th & 22nd
7am to 1pm



[Home](#)

[About](#)

[Route](#)

[Activities](#)

[Get Involved](#)

[Frequently Asked Questions](#)

[Contact DOT](#)

NYC DOT Presents Summer Streets

Summer Streets rolls on August 15!

NYC DOT and our partners are proud to present *Summer Streets*. We will temporarily close Park Avenue and connecting streets from the Brooklyn Bridge to Central Park to motor vehicles and open it up to people on three consecutive Saturdays in August (August 8, 15, & 22).

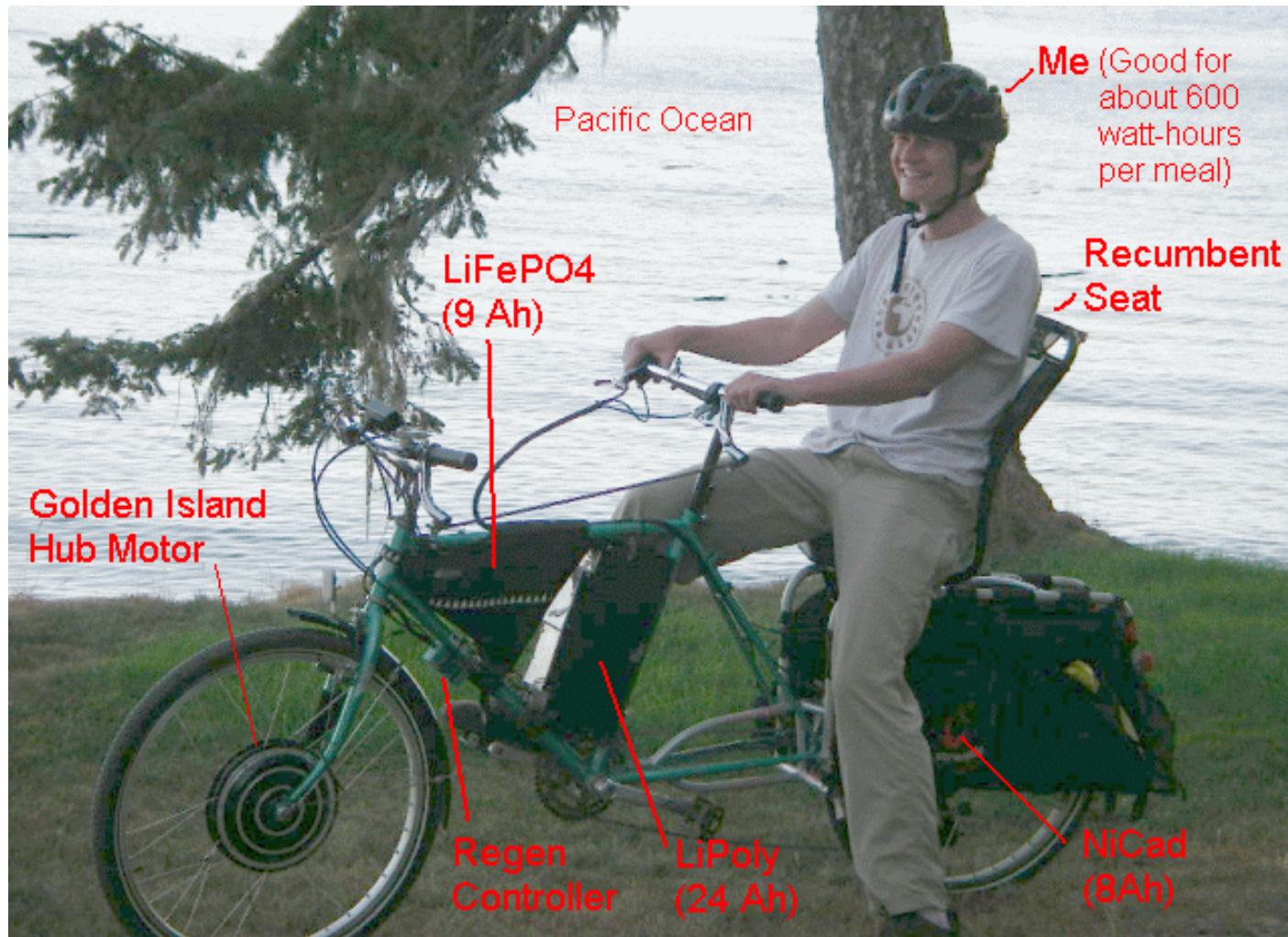
[Learn more](#)

This year DOT is also partnering with groups citywide to bring some summer streets fun to neighborhoods in all five boroughs. Visit the [Weekend Walks](#) website to find one near you.

[PHOTO CONTEST](#) »

[ROUTE MAP](#) »

General Electric trend



Public Transport Connected

- Information Management
- eTicketing
- Traffic Operations
- Fleet Management
- Staff Management
- Asset Management
 - Stops
 - Stations
 - Terminals
 - Depots

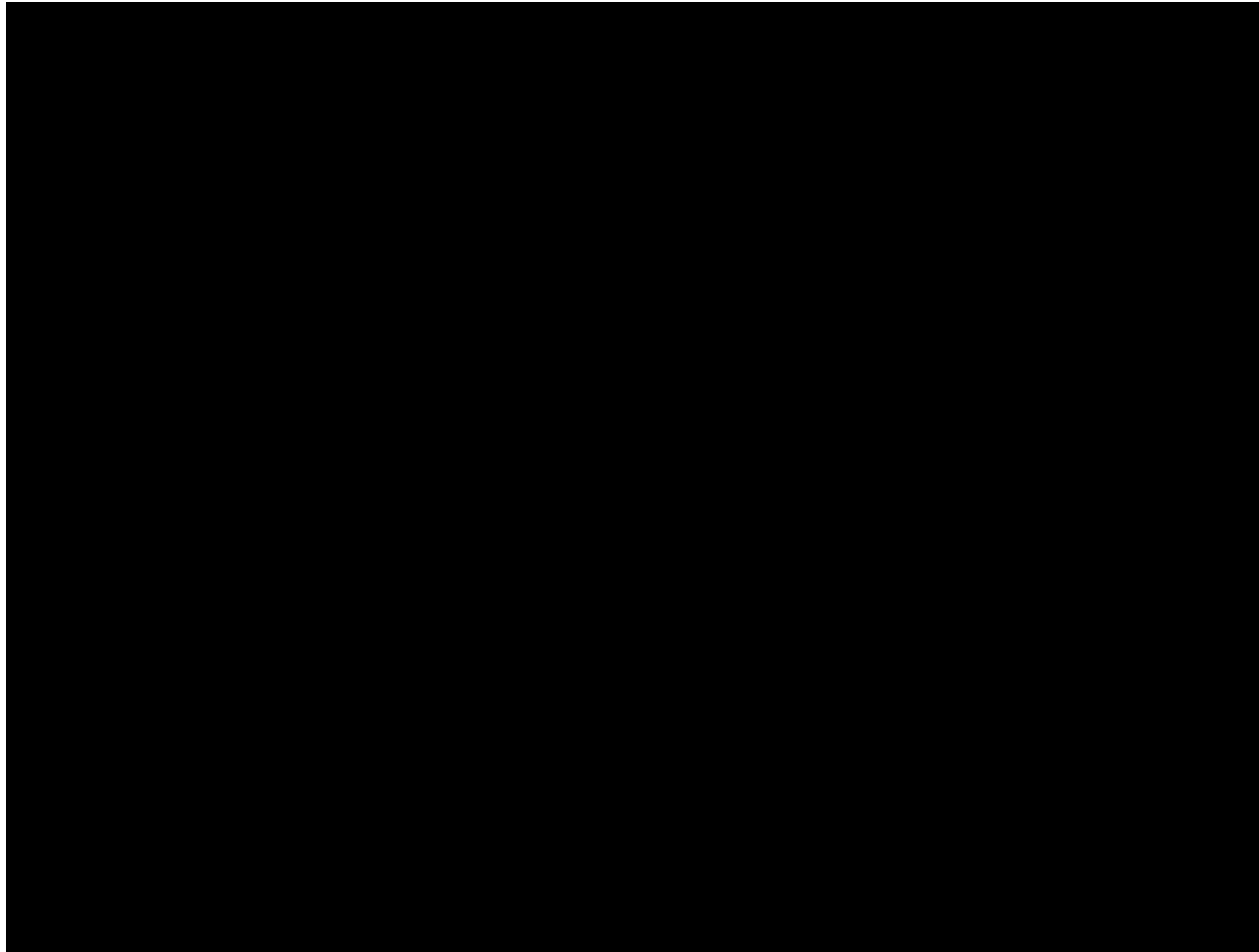


Information Management

- Real-time
- Personalised
- Localised
- Packed-in as a service in services



eTicketing



Traffic Operations

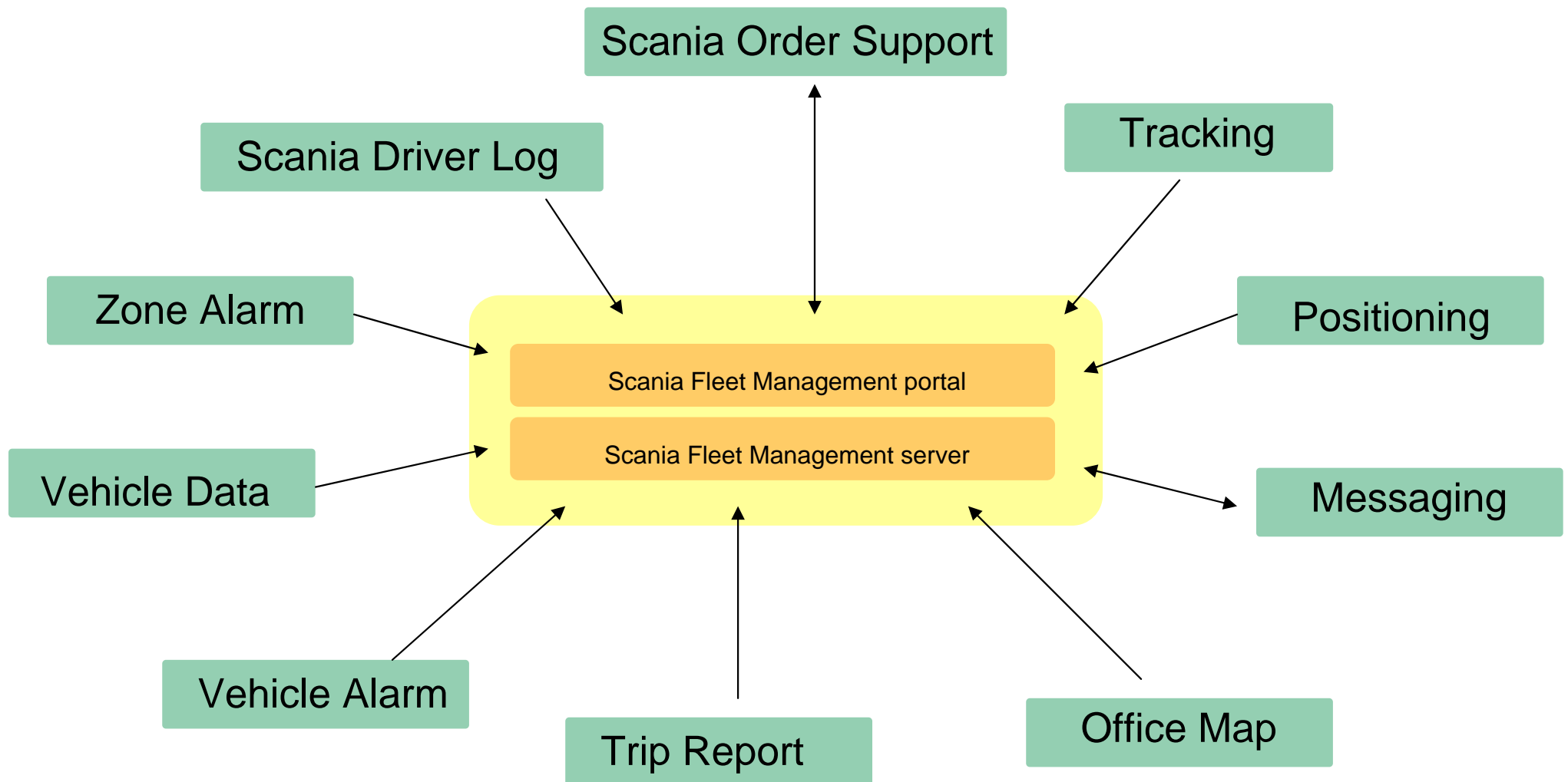


Courtesy by Trafikanten AS

Fleet Management [1]



Fleet Management [1]



Fleet Management [1]




Scania Fleet Management - Microsoft Internet Explorer

Operations Analysis Administration

Current events Positioning Messaging Alarms

Home User: admTraining Last log-in: 18/10/2005 16:44
(35 s remaining before Refresh)


Welcome to the Scania Fleet Management Portal.



Messaging: You have 1 unread message. Last message received 12/10/2005 12:29.

Alarms:

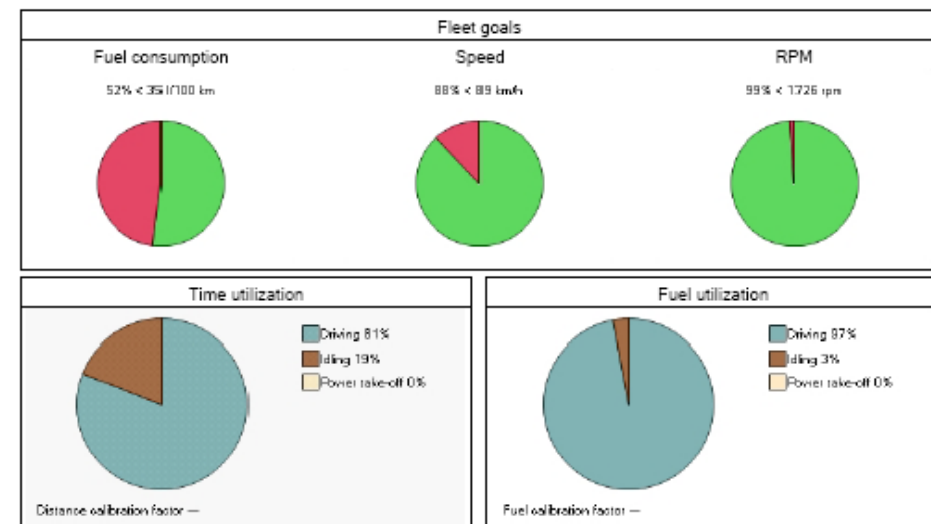
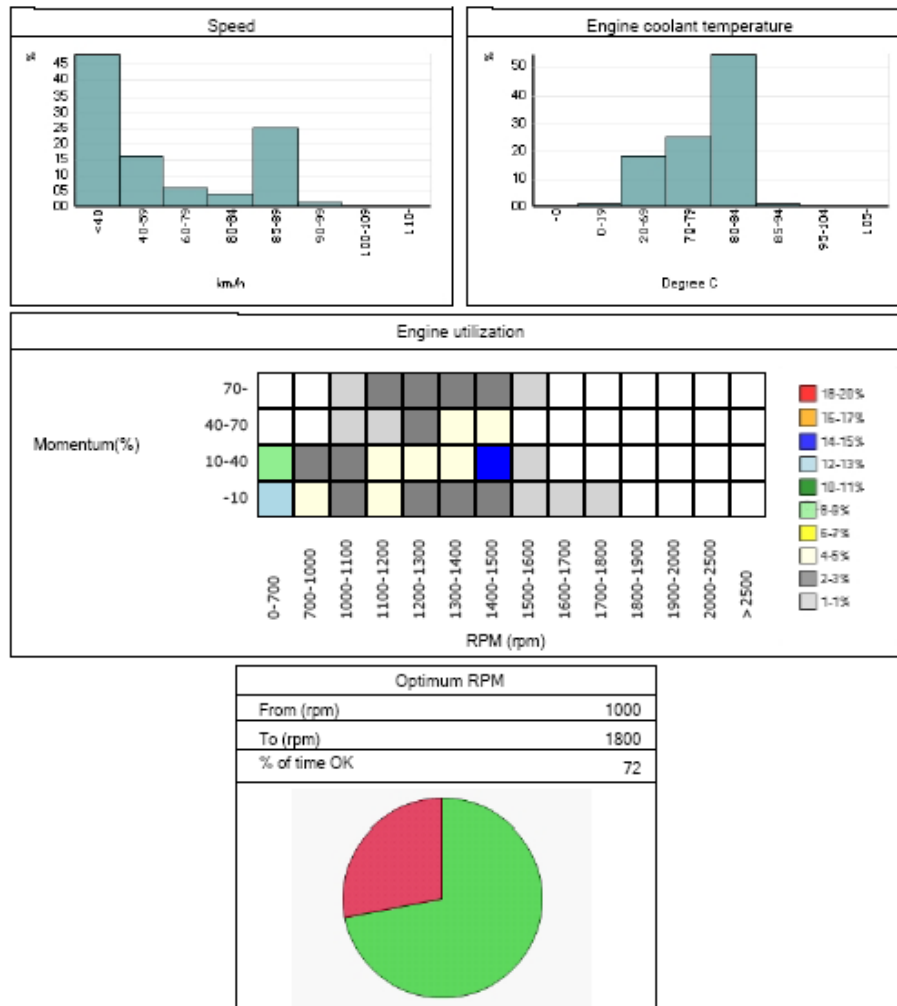
Log files: Last log file received 18/10/2005 10:11 for vehicle Scania I500.



Fleet Management [1]



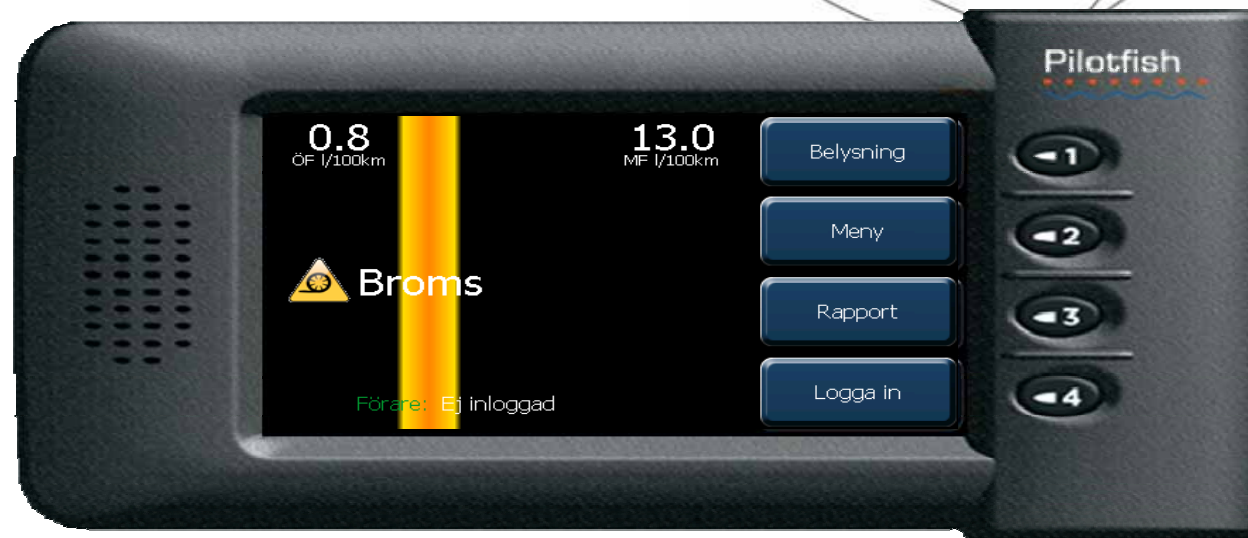
Analysis of vehicle - multiple logs



Fleet Management [2]

ecoISA

- 5-15% savings on fuel
- RoI on 9-18 month



Staff Management



Staff Management



“NS’ introduction of the wireless platform has generated an efficiency gain of 25 minutes per employee, per shift, saving an estimated 8 million Euros per year.”

Wim Liet, Head of Business Applications,
NS Reizigers Production Services



Asset Management

- Smart CCTV
- Gas detection
- Infra sensors

- Decision support systems

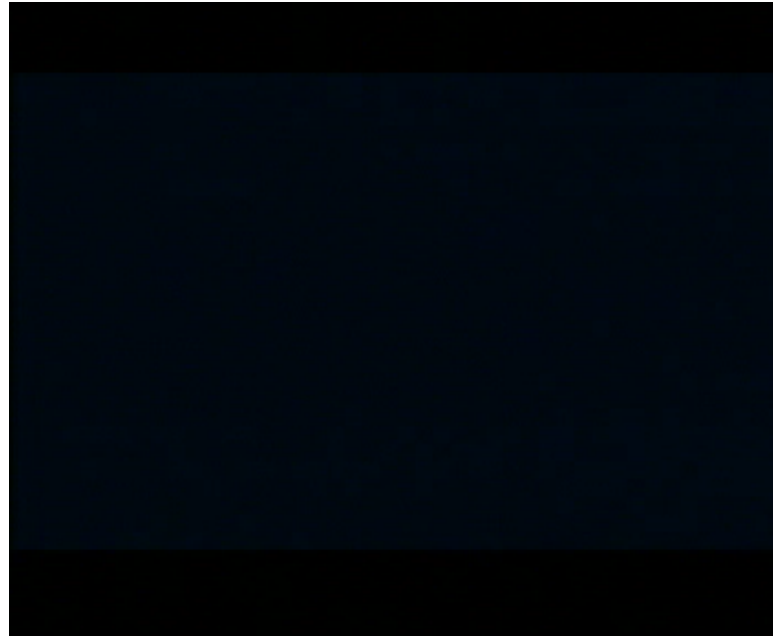




"IP Traffic Management"



The Transport System will be integrated and the choices will be « co-modalized »



Thank You!



Ake.Lindstrom@sl.se